

# Hypro Nylon and Polypropylene Fittings

## Supplemental Technical Information on Nylon and Polypropylene Fittings



**Hypro nylon fittings** are generally acceptable for use at working pressures up to 150 PSI at ambient temperatures. At very low pressures, temperatures can approach 175°F with no degradation in the performance of the nylon fitting. Nylon has resistance to a range of chemicals including most agricultural chemicals, ammonium compounds, detergents, diesel fuel, ethanol, gasoline, hexane, magnesium sulfate, most sodium compounds, trichloroethylene, and zinc sulfate. Nylon fittings should not be used with acidic fertilizers, bromine, chlorine, fluorine, hydrochloric acid, iodine, nitric acid, phosphoric acid, sulfuric acid, or xylene.

Recommended	Not Recommended
For physical or structural strength	Acid-based fertilizers/defoliants
For broad temperature range	Xylene-based chemicals
With PTFE tape	Prolonged sunlight/UV exposure



**Hypro Polypropylene fittings** are generally acceptable for use at working pressures up to 150 PSI at ambient temperatures. As with all thermoplastics, an increase in working temperature is accompanied by a decrease in acceptable operating pressure. At 140°F, the working pressure limit is 90 PSI. Polypropylene has resistance to a range of chemicals including most agricultural chemicals, acidic fertilizers, ammonium compounds, calcium carbonate, ethanol, hydrochloric acid, magnesium sulfate, oxalic acid, propionic acid, phosphoric acid and most sodium compounds. Polypropylene fittings should not be used with aromatic hydrocarbons, carbon tetrachloride, gasoline, hexane, kerosene, nitric acid, sodium hypochlorite, toluene trichloroethylene, and xylene.

Recommended	Not Recommended
Hand tight, plus 1 turn	Impact wrench, other over tightening
For normal ag growing season conditions	For temperature extremes
For acid resistance	With PTFE tape
For Sunlight/UV resistance	For toluene or xylene-based compounds
For cosmetic appearance	

# Fittings - Plastic

## Male Pipe Thread By Hose Barb



Std Pack	MPT X HB	Nylon	Poly
25	1/8" X 3/16"	A18316	3A18316
25	1/8" X 1/4"	A1814	3A1814
25	1/8" X 3/16"	A18516	-
25	1/8" X 3/8"	A1838	3A1838
25	1/4" X 3/16"	A14316	-
25	1/4" X 1/4"	A14	3A14
25	1/4" X 3/16"	A14516	-
25	1/4" X 3/8"	A1438	3A1438
25	1/4" X 1/2"	A1412	3A1412
25	3/8" X 1/4"	A3814	3A3814
25	3/8" X 5/16"	A38516	3A38516
25	3/8" X 3/8"	A38	3A38
25	3/8" X 1/2"	A3812	3A3812
25	3/8" X 5/8"	A3858	3A3858
25	1/2" X 3/16"	A12316	-
25	1/2" X 1/4"	A1214	3A1214
25	1/2" X 3/8"	A1238	3A1238
25	1/2" X 1/2"	A12	3A12
25	1/2" X 5/8"	A1258	3A1258
25	1/2" X 3/4"	A1234	3A1234
25	1/2" X 1"	A12100	-
25	3/4" X 1/4"	A3414	3A3414
25	3/4" X 3/8"	A3438	3A3438
25	3/4" X 1/2"	A3412	3A3412
25	3/4" X 5/8"	A3458	3A3458
25	3/4" X 3/4"	A34	3A34
25	3/4" X 1"	A34100	3A34100
25	1" X 3/4"	A10034	3A10034
25	1" X 1"	A100	3A100
25	1" X 1 1/4"	A100114	3A100114
1	1 1/4" X 3/4"	A11434	3A11434
1	1 1/4" X 1"	A114100	3A114100
1	1 1/4" X 1 1/4"	A114	3A114
1	1 1/4" X 1 1/2"	A114112	3A114112
1	1 1/2" X 1 1/4"	A112114	3A112114
1	1 1/2" X 1 1/2"	A112	3A112
1	2" X 2"	A200	3A200

## Female Pipe Thread By Hose Barb



Std Pack	FPT X HB	Nylon	Poly
25	1/4" X 1/4"	AF14	3AF14
25	1/4" X 3/8"	AF1438	3AF1438
25	3/8" X 1/4"	AF3814	3AF3814
25	3/8" X 3/8"	AF38	3AF38
25	3/8" X 1/2"	AF3812	3AF3812
25	1/2" X 1/4"	AF1214	3AF1214
25	1/2" X 3/8"	AF1238	3AF1238
25	1/2" X 1/2"	AF12	3AF12
25	1/2" X 5/8"	AF1258	3AF1258
25	1/2" X 3/4"	AF1234	3AF1234
25	3/4" X 3/8"	AF3438	3AF3438
25	3/4" X 1/2"	AF3412	3AF3412
25	3/4" X 5/8"	-	3AF3458
25	3/4" X 3/4"	AF34	3AF34

## Elbows: Male Pipe Thread By Hose Barb



Std Pack	MPT X HB	Nylon	Poly
25	1/8" X 3/16"	EL18316	—
25	1/8" X 1/4"	EL1814	3EL1814
25	1/8" X 3/16"	EL18516	—
25	1/8" X 3/8"	EL1838	3EL1838
25	1/4" X 3/16"	—	3EL14316
25	1/4" X 1/4"	EL14	3EL14
25	1/4" X 5/16"	EL14516	—
25	1/4" X 3/8"	EL1438	3EL1438
25	1/4" X 1/2"	EL1412	3EL1412
25	1/4" X 5/8"	EL1458	—
25	3/8" X 1/4"	EL3814	3EL3814
25	3/8" X 5/16"	EL38516	—
25	3/8" X 3/8"	EL38	3EL38
25	3/8" X 1/2"	EL3812	3EL3812
25	3/8" X 5/8"	EL3858	3EL3858
25	1/2" X 1/4"	EL1214	3EL1214
25	1/2" X 3/8"	EL1238	3EL1238
25	1/2" X 1/2"	EL12	3EL12
25	1/2" X 5/8"	EL1258	3EL1258
25	1/2" X 3/4"	EL1234	3EL1234
25	1/2" X 1"	EL12100	—
25	3/4" X 1/4"	EL3414	3EL3414
25	3/4" X 3/8"	EL3438	3EL3438
25	3/4" X 1/2"	EL3412	3EL3412
25	3/4" X 5/8"	EL3458	3EL3458
25	3/4" X 3/4"	EL34	3EL34
25	3/4" X 1"	EL34100	3EL34100
25	1" X 1/2"	EL10012	3EL10012
25	1" X 3/4"	EL10034	3EL10034
25	1" X 1"	EL100	3EL100
1	1 1/4" X 3/4"	EL11434	3EL11434
1	1 1/4" X 1"	EL114100	3EL114100
1	1 1/4" X 1 1/4"	EL114	3EL114
1	1 1/4" X 1 1/2"	EL114112	3EL114112
1	1 1/2" X 1 1/2"	EL112	3EL112
1	2" X 2"	EL200	3EL200

## Elbows: Female Pipe Thread By Hose Barb



Std Pack	FPT X HB	Nylon	Poly
25	1/4" X 3/16"	—	3EL14316F
25	1/4" X 1/4"	EL14F	3EL14F
25	1/4" X 3/8"	EL1438F	3EL1438F
25	3/8" X 1/4"	EL3814F	3EL3814F
25	3/8" X 3/8"	EL38F	3EL38F
25	3/8" X 1/2"	EL3812F	3EL3812F
25	1/2" X 5/8"	EL1258F	3EL1258F
25	1/2" X 3/4"	EL1234F	3EL1234F
25	3/4" X 1/2"	EL3412F	3EL3412F
25	3/4" X 5/8"	EL3458F	3EL3458F
25	3/4" X 3/4"	EL34F	3EL34F

## Street Elbows: Female Pipe Thread By Male Pipe Thread



Std Pack	FPT X MPT	Nylon	Poly
25	1/4" X 1/4"	SE14	3SE14
25	3/8" X 3/8"	SE38	—
25	1/2" X 1/2"	SE12	3SE12
25	3/4" X 3/4"	SE34	3SE34
10	1" X 1"	SE100	3SE100
1	1 1/4" X 1 1/4"	SE114	3SE114
1	1 1/2" X 1 1/2"	SE112	3SE112
1	2" X 2"	SE200	3SE200

### Street Elbows – 45°



Std Pack	MPT X FPT	Nylon	Poly
25	¾" X ¾"	SE3445	3SE3445
10	¼" X ¼"	SE1445	—

### Elbows: Female Pipe Thread – 90°



Std Pack	FPT X FPT	Nylon	Poly
25	½" X ½"	LL12	3LL12
10	¾" X ¾"	LL34	3LL34
1	1" X 1"	LL100	3LL100
1	1¼" X 1¼"	LL114	3LL114
1	1½" X 1½"	LL112	3LL112
1	2" X 2"	LL200	3LL200

### Tees: Female Pipe Thread



Std Pack	FPT X FPT X FPT	Nylon	Poly
25	¼"	TT14	3TT14
10	½"	TT12	3TT12
10	¾"	TT34	3TT34
1	1"	TT100	3TT100
1	1¼"	TT114	3TT114
1	1½"	TT112	3TT112
1	2"	TT200	3TT200

### Tees: Female Pipe Thread with ¼" Gauge Port



Std Pack	FPT X FPT X FPT	Nylon	Poly
25	½"	GTT1214	3GTT1214
1	¾"	GTT3414	3GTT3414

### Reducer Bushings



Std Pack	MPT X FPT	Nylon	Poly
25	¼" X ½"	—	3RB1418
25	¾" X ½"	RB3818	3RB3818
25	¾" X ¼"	RB3814	3RB3814
25	½" X ½"	RB1218	3RB1218
25	½" X ¼"	RB1214	3RB1214
25	½" X ¾"	RB1238	3RB1238
25	¾" X ½"	RB3418	3RB3418
25	¾" X ¼"	RB3414	3RB3414
25	¾" X ¾"	RB3438	3RB3438
25	¾" X ½"	RB3412	3RB3412
25	1" X ½"	RB10012	3RB10012
25	1" X ¾"	RB10034	3RB10034
1	1¼" X ¾"	RB11434	3RB11434
1	1¼" X 1"	RB114100	3RB114100
1	1½" X ¾"	RB11234	3RB11234
1	1½" X 1"	RB112100	3RB112100
1	1½" X 1¼"	RB112114	3RB112114
1	2" X ¾"	RB20034	3RB20034
1	2" X 1"	RB200100	3RB200100
1	2" X 1¼"	RB200114	3RB200114
1	2" X 1½"	RB200112	3RB200112
1	2½" X 2"	RB212200	—
1	3" X 2"	RB300200	3RB300200

## Nipples: Male Pipe Thread By Male Pipe Thread



Std Pack	MPT X MPT	Nylon	Poly
25	1/8" X 1/8"	M18	3M18
25	1/4" X 1/4"	M14	3M14
25	3/8" X 3/8"	M38	3M38
25	1/2" X 1/2"	M12	3M12
25	3/4" X 3/4"	M34	3M34
25	1" X 1"	M100	3M100
1	1 1/4" X 1 1/4"	M114	3M114
1	1 1/2" X 1 1/2"	M112	3M112
1	2" X 2"	M200	3M200
25	1/4" X 1/8"	M1418	3M1418
25	3/8" X 1/8"	M3818	3M3818
25	3/8" X 1/4"	M3814	3M3814
25	1/2" X 1/8"	M1218	-
25	1/2" X 1/4"	M1214	3M1214
25	1/2" X 3/8"	M1238	3M1238
25	3/4" X 3/8"	M3438	3M3438
25	3/4" X 1/2"	M3412	3M3412

## Female Coupler



Std Pack	FPT X FPT	Nylon	Poly
25	1/2" X 1/2"	FC12	3FC12
25	3/4" X 3/4"	FC34	3FC34
25	1" X 1"	FC100	3FC100
1	1 1/4" X 1 1/4"	FC114	3FC114
1	1 1/2" X 1 1/2"	FC112	3FC112
1	2" X 2"	FC200	3FC200

## Hex Plug with Male Pipe Thread



Std Pack	MPT	Nylon	Poly
25	1/8"	F18	3F18
25	1/4"	F14	3F14
25	3/8"	F38	3F38
25	1/2"	F12	3F12
25	3/4"	F34	3F34
25	1"	F100	3F100
1	1 1/4"	F114	3F114
1	1 1/2"	F112	3F112
1	2"	F200	3F200

## Hose Barb Fittings



Std Pack	HB X HB	Nylon	Poly
25	1/4" X 1/4"	EL14HB	3EL14HB
25	3/8" X 1/4"	EL3814HB	3EL3814HB
25	3/8" X 3/8"	EL38HB	3EL38HB
25	1/2" X 1/4"	EL1214HB	3EL1214HB
25	1/2" X 3/4"	EL1238HB	3EL1238HB
25	1/2" X 1/2"	EL12HB	3EL12HB
25	5/8" X 5/8"	EL58HB	3EL58HB
25	3/4" X 3/8"	EL3458HB	3EL3458HB
25	3/4" X 3/4"	EL34HB	3EL34HB
25	1" X 1"	EL100HB	-
1	1 1/4" X 1 1/4"	EL114HB	3EL114HB
1	1 1/2" X 1 1/2"	EL112HB	3EL112HB
1	2" X 2"	EL200HB	3EL200HB

## Hose Mender



Std Pack	HB X HB	Nylon	Poly
25	1/8" X 1/8"	HM18*	-
25	1/4" X 3/16"	HM14316*	-
25	1/4" X 1/4"	SHM14	3SHM14
25	1/4"	HM14*	3HM14*
25	5/16"	HM516*	3HM516*
25	3/8" X 1/4"	HM3814*	3HM3814*
25	3/8" X 3/8"	SHM38	3SHM38
25	1/2" X 1/4"	HM1214*	3HM1214*
25	1/2" X 3/8"	SHM1238	3SHM1238
25	1/2" X 3/8"	HM1238*	3HM1238*
25	1/2" X 1/2"	SHM12	3SHM12
25	1/2" X 5/8"	SHM1258	3SHM1258
25	5/8" X 3/8"	HM5838*	3HM5838*
25	5/8" X 5/8"	SHM58	3SHM58
25	5/8" X 5/8"	HM58*	-
25	3/4" X 3/4"	SHM34	3SHM34
25	1" X 1"	SHM100	3SHM100
1	1 1/4" X 1 1/4"	SHM114	3SHM114
1	1 1/2" X 1 1/2"	SHM112	3SHM112
1	2" X 2"	SHM200	3SHM200

\*No center stop as pictured.

## Tees: Hose Barbs



Std Pack	HB X HB (1 x 2 & 3)	Nylon	Poly
25	1/8" X 1/8"	T18	-
25	1/4" X 1/4"	T14	3T14
25	1/4" X 3/8"	T1438	3T1438
25	3/8" X 3/8"	T38	3T38
25	3/8" X 1/2"	T3812	3T3812
25	3/8" X 5/8"	T3858	-
25	1/2" X 3/8"	T1238	3T1238
25	1/2" X 1/2"	T12	3T12
25	5/8" X 5/8"	T58	3T58
25	3/4" X 1/2"	T3412	3T3412
25	3/4" X 3/4"	T34	3T34
25	1" X 1"	T100	3T100
1	1 1/4" X 1 1/4"	T114	3T114
1	1 1/2" X 1 1/2"	T112	3T112
1	2" X 2"	T200	3T200

## Tees: Male Pipe Thread By Hose Barbs



Std Pack	MPT X HB	Nylon	Poly
25	1/8" X 1/4"	T1814T	-
25	1/4" X 1/4"	T14T	3T14T
25	1/4" X 3/8"	T1438T	3T1438T
25	1/4" X 1/2"	T1412T	-
25	3/8" X 1/4"	T3814T	-
25	3/8" X 3/8"	T38T	3T38T
25	3/8" X 1/2"	T3812T	3T3812T
25	1/2" X 3/8"	T1238T	3T1238T
25	1/2" X 1/2"	T12T	3T12T
25	1/2" X 5/8"	T1258T	-
25	1/2" X 3/4"	T1234T	3T1234T
25	3/4" X 3/8"	-	3T3438T
25	3/4" X 1/2"	T3412T	3T3412T
25	3/4" X 5/8"	-	3T3458T
25	3/4" X 3/4"	T34T	3T34T
25	3/4" X 1"	T34100T	-

## Tees: Hose Barb By Female Pipe Thread



Std Pack	FPT X HB	Nylon	Poly
25	3/4" X 3/4"	T34F	3T34F

## Male Garden Hose Thread By Hose Barb



Std Pack	MGHT X HB	Nylon	Poly
25	3/4" X 1/4"	D3414	-
25	3/4" X 3/8"	D3438	3D3438
25	3/4" X 1/2"	D3412	3D3412
25	3/4" X 5/8"	D3458	3D3458
25	3/4" X 3/4"	D34	3D34
25	3/4" X 1"	D34100	-

## Elbows: Male Garden Hose Thread By Hose Barb



Std Pack	MGHT X HB	Nylon	Poly
25	3/4" X 1/4"	ELD3414	3ELD3414
25	3/4" X 3/8"	ELD3438	3ELD3438
25	3/4" X 1/2"	ELD3412	3ELD3412
25	3/4" X 5/8"	ELD3458	-
25	3/4" X 3/4"	ELD34	3ELD34

## Adapters: Male Garden Hose Thread By Male Pipe Thread



Std Pack	MGHT X MPT	Nylon	Poly
25	3/4" X 3/8"	E3438	3E3438
25	3/4" X 1/2"	E3412	3E3412
25	3/4" X 3/4"	E34	3E34

## Adapter Couplings: Female Garden Hose Thread By Female Pipe Thread



Std Pack	FGHT X FPT	Nylon	Poly
25	3/4" X 1/2"	J3412	3J3412

## Adapters: Female Garden Hose Thread By Male Pipe Thread



Std Pack	FGHT X MPT	Nylon	Poly
25	3/4" X 3/4"	H34	3H34

## Adapters: Male Garden Hose Thread By Female Pipe Thread



Std Pack	MGHT X FPT	Nylon	Poly
25	3/4" X 1/2"	G3412	3G3412
25	3/4" X 1/4"	G3414	3G3414
25	3/4" X 3/4"	G34	3G34

### Adapters: Female Garden Hose Thread By Male Garden Hose Thread



Std Pack	FGHT X MGHT	Nylon	Poly
25	3/4" X 3/4"	I34	3I34

### Female Garden Hose Cap Knurled



Std Pack	FGHT	Nylon	Poly
25	3/4"	N34	3N34

### Female Pipe Thread By Hose Barb Fitting



Std Pack	FPT X HB	Nylon	Poly
25	1/2" X 1/2"	Q12	3Q12
50	1/4" X 1/4"	Q14	3Q14

### Female Pipe Straight Swivel Nut-Hex



Std Pack	FPS	Nylon	Poly
25	3/4"	B35	3B35
25	1"	B100	3B100

### Female Garden Hose Swivel Nut-Knurled



Std Pack	FGHT	Nylon	Poly
25	3/4"	B34	3B34

### Flat Seat Hose Barb



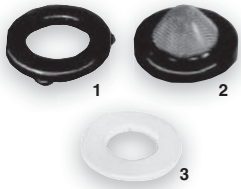
Std Pack	HB	Nylon	Poly
25	1/4"	C14	3C14
25	3/8"	C38	3C38
25	1/2"	C12	3C12
25	3/4"	C58	3C58
25	3/4"	C34	3C34
25	1"	C100	3C100

### Female Thread Swivel Hex Nut, Barb Insert with Ball Seat



Std Pack	Size	Nylon
<b>BARB ONLY</b>		
50	1/4" HB	NC14
50	3/8" HB	NC38
50	1/2" HB	NC12
<b>NUT ONLY</b>		
50	1/4"	NC14N
50	3/8"	NC38N
50	1/2"	NC12N
50	1/2" with 1/4" HB	NC1214

## Washers



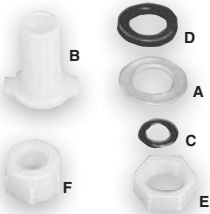
Std Pack	OD X ID	Description	Part Number
100	1" X ¾"	Black Vinyl (1)	W406V
100	1" X ¾"	S.S. Filter 50/60 Mesh (2)	W160M
100	1" X ½"	Natural Polypropylene (3)	W405P

## Rope Wick Parts Unassembled



Std Pack	Description	Nylon	Poly
25	¾" MGHT X ¾" MPT (A)	E34	3E34
25	¾" FGHT Nut with ½" hole (B)	B3412	3B3412
25	¾" MGHT X ½" MPT (C)	E3412	3E3412

## Rope Wick Parts Unassembled



Std Pack	Description	Nylon	Poly
100	Nylon Washer (A)	RW1116A	3RW1116A
50	Main Body (B)	RW1116B	-
100	O-ring Black EPDM (C)	RW1116C	RW1116C
100	Grommet Black EPDM (D)	RW1116D	RW1116D
25	1½" - 16 UN (Lock) Nut (E)	B12	3B12
25	1½" - 16 UN Swivel Nut (F)	8027	38027

## Hose-Saver Straight Assembly – Nylon



MPT X HB	Part Number	Cap Part Number
¾" X ¾"	626320N	626012
¾" X 1"	626325N	626014
1" X ¾"	626420N	626012
1" X 1"	626425N	626014
1¼" X 1"	626525N	626014
1¼" X 1¼"	626532N	626014
1½" X 1¼"	626632N	626014
1½" X 1½"	626638N	626016
1½" X 2"	626651N	-
2" X 2"	626751N	-

## Hose-Saver Elbow Assembly – Nylon



MPT X HB	Part Number	Cap Part Number
¾" X ¾"	627320N	626012
¾" X 1"	627325N	626014
1" X ¾"	627420N	626012
1" X 1"	627425N	626014
1" X 1¼"	627432N	626014
1¼" X 1"	627525N	626014
1¼" X 1¼"	627532N	626014
1½" X 1¼"	627632N	626014
1½" X 1½"	627638N	626016
1½" X 2"	627651N	-
2" X 2"	627751N	-

# Fittings - Stainless Steel

## Male Pipe Thread By Hose Barb



MPT x HB	316 Stainless Steel
1/4" X 1/4"	9A14
1/4" X 3/8"	9A1438
1/4" X 1/2"	9A1412
1/2" X 1/2"	9A12
3/4" X 3/4"	9A34
1" X 1"	9A100
1 1/4" X 1 1/4"	9A114
1 1/2" X 1 1/2"	9A112
2" X 2"	9A200
3" X 3"	9A300

## Street Elbow: Female Pipe Thread By Male Pipe Thread



MPT X FPT	304 Stainless Steel
1/4" X 1/4"	7SE14
3/8" X 3/8"	7SE38
1/2" X 1/2"	7SE12
3/4" X 3/4"	7SE34
1" X 1"	7SE100
1 1/2" X 1 1/2"	7SE112
1 1/4" X 1 1/4"	7SE114
2" X 2"	7SE200
3" X 3"	7SE300

## Coupling: Female Pipe Thread



FPT X FPT	304 Stainless Steel
1/4" X 1/4"	7FC14
1/2" X 1/2"	7FC12
3/4" X 3/4"	7FC34
1" X 1"	7FC100
1 1/2" X 1 1/2"	7FC112
2" X 2"	7FC200
3" X 3"	7FC300

## Tee: Female Pipe Thread



FPT X FPT X FPT	304 Stainless Steel
1/4"	7TT14
1/2"	7TT12
3/4"	7TT34
1"	7TT100
1 1/4"	7TT114
1 1/2"	7TT112
2"	7TT200
3"	7TT300

## Elbow: Female Pipe Thread – 90°



FPT X FPT	304 Stainless Steel
1/4" X 1/4"	7LL14
1/2" X 1/2"	7LL12
3/4" X 3/4"	7LL34
1" X 1"	7LL100
1 1/2" X 1 1/2"	7LL112
1 1/4" X 1 1/4"	7LL114
2" X 2"	7LL200
3" X 3"	7LL300

## Nipple



MPT X Length	304 Stainless Steel
1/4" X 1 1/2"	714112
1/4" X 3"	714300
1/4" X 4"	714400
1/4" X 6"	714600
1/4" X 12"	7141200
3/8" X 1"	738100
3/8" X 1 1/2"	738112
1/2" X 1 1/8"	712118
1/2" X 1 1/2"	712112
1/2" X 2"	712200
3/4" X 1 3/8"	734138
3/4" X 4"	734400
1" X 1 1/2"	7100112
1" X 4"	7100400
1 1/4" X 1 3/8"	7114158
1 1/2" X 1 3/4"	7112134
2" X 2"	7200200
2" X 2 1/2"	7200212
2" X 4"	7200400
2" X 6"	7200600
2" X 3"	7200300
2" X 3 1/2"	7200312
2" X 5"	7200500

## Reducer Bushing



MPT X FPT	304 Stainless Steel
1/4" X 3/8"	7RB1418
3/8" X 1/4"	7RB3814
1/2" X 1/4"	7RB1214
1/2" X 3/8"	7RB1238
3/4" X 1/4"	7RB3414
3/4" X 1/2"	7RB3412
1" X 1/2"	7RB10012
1" X 3/4"	7RB10034
2" X 1 1/2"	7RB200112

# Fittings - Steel

## Male Pipe Thread By Hose Barb



MPT X HB	Steel
1/8" X 1/4"	A1814S
1/8" X 3/8"	A1838S
1/4" X 1/4"	A14S
1/4" X 3/8"	A1438S
1/4" X 1/2"	A1412S
3/8" X 1/4"	A3814S
3/8" X 3/8"	A38S
3/8" X 1/2"	A3812S
1/2" X 1/4"	A1214S
1/2" X 3/8"	A1238S
1/2" X 1/2"	A12S
1/2" X 5/8"	A1258S
1/2" X 3/4"	A1234S
3/4" X 3/8"	A3438S
3/4" X 1/2"	A3412S
3/4" X 5/8"	A3458S
3/4" X 3/4"	A34S
3/4" X 1"	A34100S
1" X 1"	A100S

# Fittings - Brass

## Male Pipe Thread By Hose Barb



MPT X HB	Brass
1/8" X 1/4"	A1814B
1/8" X 3/8"	A1838B
1/4" X 1/4"	A14B
1/4" X 3/8"	A1438B
1/4" X 1/2"	A1412B
3/8" X 1/4"	A3814B
3/8" X 3/8"	A38B
3/8" X 1/2"	A3812B
1/2" X 1/4"	A1214B
1/2" X 3/8"	A1238B
1/2" X 1/2"	A12B
1/2" X 5/8"	A1258B
1/2" X 3/4"	A1234B
3/4" X 3/8"	A3438B
3/4" X 1/2"	A3412B
3/4" X 5/8"	A3458B
3/4" X 3/4"	A34B
3/4" X 1"	A34100B
1" X 1"	A100B

## King Nipple



MPT X HB	Plated Steel
3/4"	AA34P
1" X 3/4"	AA10034P
1"	AA100P
1 1/4"	AA114P
1 1/2"	AA112P
2"	AA200P

## Female Pipe Thread By Hose Barb



FPT X HB	Brass
1/4" X 3/8"	AF1438B

## Female Pipe Straight Swivel Nut – Hex



FPS	Steel
3/4"	B35S

NOTE: For use with steel flat hose barbs 1/4" to 3/4".

## Street Elbows: Female Pipe Thread By Male Pipe Thread



MPT X FPT	Brass
1/4" X 1/4"	SE14B
3/8" X 3/8"	SE38B
1/2" X 1/2"	SE12B

## Flat Seat Hose Barb



HB	Steel
1/2"	C12S
3/4"	C34S

## Hose Mender



HB	Brass
1/4" X 1/4"	SHM14B
3/8" X 3/8"	SHM38B
1/2" X 1/2"	SHM12B
5/8" X 5/8"	SHM58B
3/4" X 3/4"	SHM34B

### Flat Seat Hose Barb



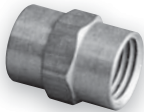
HB	Brass
3/8"	C38B
1/2"	C12B
5/8"	C58B
3/4"	C34B

### Swivel Nut – Hex Female Garden Hose Thread



FGHT	Brass
3/4"	B33B

### Couplings: Female Pipe Thread



FPT X FPT	Brass
1/4" X 1/4"	FC14B
1/2" X 1/2"	FC12B

### Male Garden Hose Thread By Hose Barb



MGHT X HB	Brass
3/4" X 3/8"	D3438B
3/4" X 1/2"	D3412B
3/4" X 5/8"	D3458B
3/4" X 3/4"	D34B

### Swivel Adapter



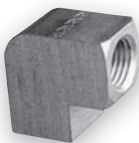
MPT	Brass
3/8"	SA38B
1/2"	SA12B

### Adapters: Male Garden Hose Thread By Male Pipe Thread



MGHT X MPT	Brass
3/4" X 1/2"	E3412B
3/4" X 3/4"	E34B

### Elbows: Female Pipe Thread – 90°



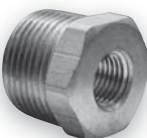
FPT X FPT	Brass
1/4" X 1/4"	LL14B

### Hex Plug with Male Pipe Thread



MPT	Brass
1/4"	F14B
3/8"	F38B
1/2"	F12B

### Reducer Bushings



MPT X FPT	Brass
1/4" X 1/8"	RB1418B
1/2" X 1/4"	RB1214B
1/2" X 3/8"	RB1238B
3/4" X 1/2"	RB3412B

### Female Garden Hose Swivel Nut – Knurled



FGHT	Brass
3/4"	B34B

NOTE: For use with flat seat hose barbs 1/4" to 3/4".