

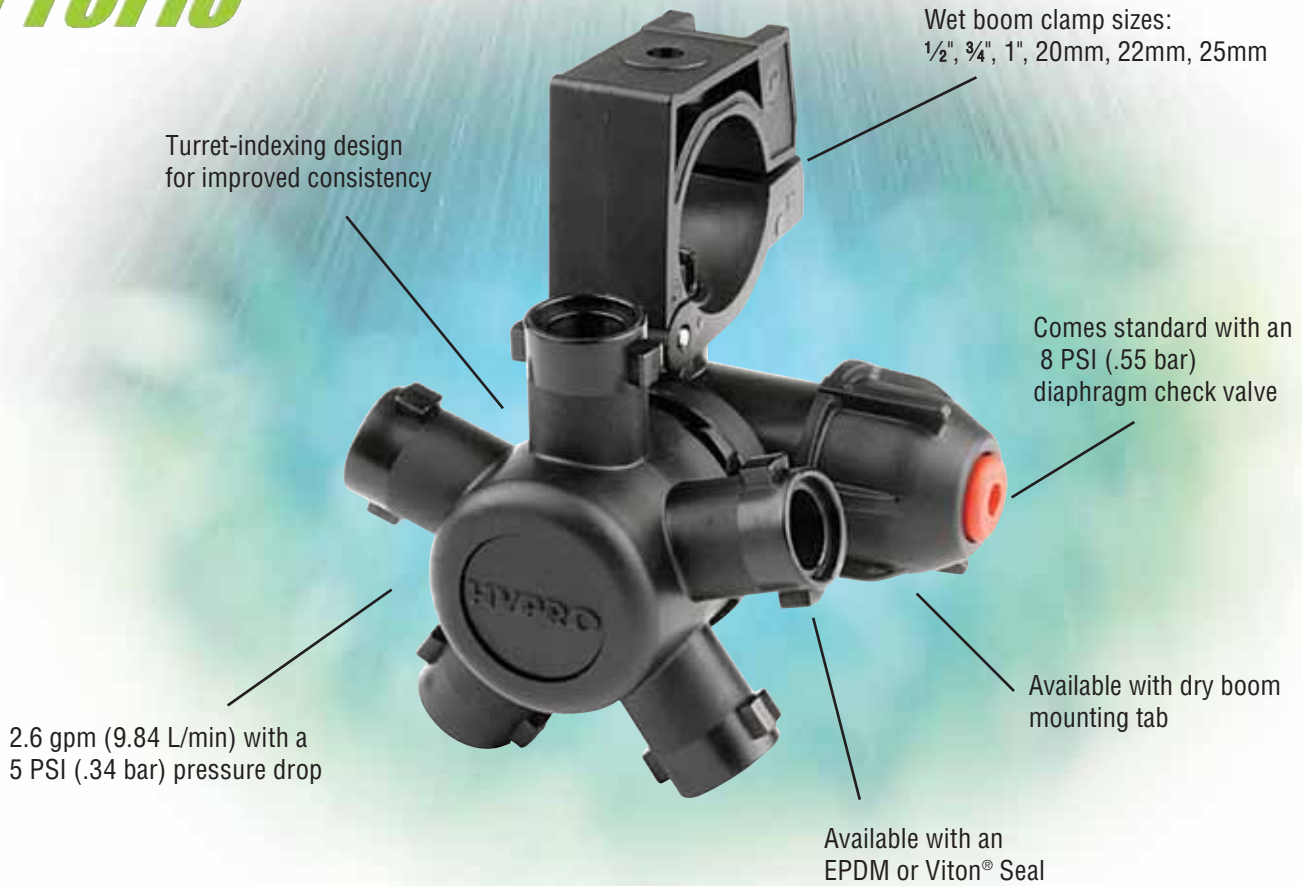
 **HYPRO**

ProFlo™

Nozzle Bodies with Superior Durability and High Flow Rates



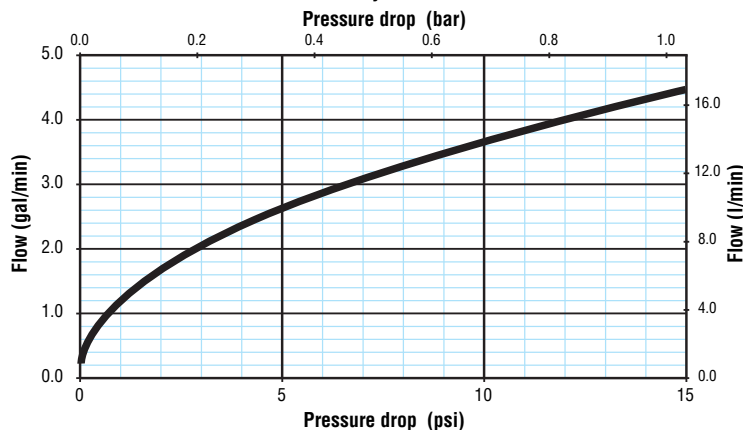
PROFLO



FEATURES & BENEFITS

- Turret-indexing design provides improved consistency and reliability throughout the life of the nozzle body – eliminating free spinning and seizing problems seen on competitive nozzle bodies
- Unique DCV (diaphragm check valve) design reduces restrictions in the flow path, enabling 2.6 gpm (9.84 L/min) with a 5 psi (.34 bar) pressure drop through the nozzle
- Three turret styles for an easy change of spray tips: single, 3-way, and 5-way
- Provides lowest pressure drop at any given flow in the industry
- Available in wet or dry boom versions
- Positive shutoff between each spray position
- Custom logos available upon request (minimum quantities apply)
- Designed to deliver the highest flow rates across the spraying pressure range
- Supports faster field speeds with the same coverage and supports direct fertilizer application through the nozzle body DCV flow path
- Automatic spray alignment using flat fan spray tips
- Compact design makes mounting easier with less potential interference with the spray boom structure
- ProFlo nozzle bodies come standard with an 8 psi (.55 bar) diaphragm check valve. 4 psi, 12 psi, 20 psi, and 25 psi (.28, .83, 1.4, and 1.7 bar) checks are available as options

ProFlo Nozzle Body Performance Curve



Wet Boom Nozzle Bodies

3 & 5-Way Nozzle Bodies for Wet Boom (no tab for boom clamp)



Seal Option/ Housing Reference	Turret Options	(to clamp on) Pipe Size				
		1/2"	3/4"	1"	20mm	25mm
EPDM/Red	3	4223N-B322	4223N-B323	4223N-B324	4223N-B327	4223N-B328
	5	4223N-B522	4223N-B523	4223N-B524	4223N-B527	4223N-B528
Viton/Green	3	4223N-B322V	4223N-B323V	4223N-B324V	4223N-B327V	4223N-B328V
	5	4223N-B522V	4223N-B523V	4223N-B524V	4223N-B527V	4223N-B528V

Sold in Quantities of 100
 For Individual Bags, Add Suffix -00 (i.e.: 4223N-B322-00)
 Internal Seal Kit 3430-0754 and 3430-0754V
 Mounting Kit 3430-0755 and 3430-0755V

3 & 5-Way Nozzle Bodies with Tab for Boom Clamp



Seal Option/ Housing Reference	Turret Options	(to clamp on) Pipe Size				
		1/2"	3/4"	1"	20mm	25mm
EPDM/Red	3	4243N-B322	4243N-B323	4243N-B324	4243N-B327	4243N-B328
	5	4243N-B522	4243N-B523	4243N-B524	4243N-B527	4243N-B528
Viton/Green	3	4243N-B322V	4243N-B323V	4243N-B324V	4243N-B327V	4243N-B328V
	5	4243N-B522V	4243N-B523V	4243N-B524V	4243N-B527V	4243N-B528V

Sold in Quantities of 100
 For Individual Bags, Add Suffix -00 (i.e.: 4243N-B322-00)
 Internal Seal Kit 3430-0754 and 3430-0754V
 Mounting Kit 3430-0755 and 3430-0755V

Triple Nozzle Bodies for Wet Boom



Part Number	Description
4222N-B322	1/2" Split Clamp
4222N-B323	3/4" Split Clamp
4222N-B324	1" Split Clamp
4222N-B323C	3/4" Hinged Clamp
4222N-B324C	1" Hinged Clamp
4222N-B334C	1" Hinged Clamp 12 psi DCV

Single Drop Nozzle Body for Wet Boom



Seal Option/ Housing Reference	(to clamp on) Pipe Size				
	1/2"	3/4"	1"	20mm	25mm
EPDM/Red	4221N-B122	4221N-B123	4221N-B124	4221N-B127	4221N-B128
Viton/Green	4221N-B122V	4221N-B123V	4221N-B124V	4221N-B127V	4221N-B128V

1/4" FNPT Outlet- Substitute B with F (i.e.: 4221N-F122)
 Sold in Quantities of 100
 For Individual Bags, Add Suffix -00 (i.e.: 4221N-B122-00)

Wet Boom Single Nozzle Bodies-No Diaphragm Check Valve



Single hose barb P/N	Hose ID
4201N-B102	1/2" Clamp
4201N-B103	3/4" Clamp
4201N-B104	1" Clamp

Dry Boom Nozzle Bodies

3 & 5-Way Nozzle Bodies with Tab for Boom Clamp and Hose Barb for Dry Boom



Seal Option/ Housing Reference	Turret options	3/4"		1"	
		Single-Ended HB	Double-Ended HB	Single-Ended HB	Double-Ended HB
EPDM/Red	3	4263N-B323S	4263N-B323D	4263N-B324S	4263N-B324D
	5	4263N-B523S	4263N-B523D	4263N-B524S	4263N-B524D
Viton/Green	3	4263N-B323SV	4263N-B323DV	4263N-B324SV	4263N-B324DV
	5	4263N-B523SV	4263N-B523DV	4263N-B524SV	4263N-B524DV

Sold in Quantities of 100
For Individual Bags, Add Suffix -00 (i.e.: 4263N-B323S-00)
Internal Seal Kit 3430-0754 and 3430-0754V
Mounting Kit 3430-0755 and 3430-0755V

Hose Barb Triple Nozzle Bodies



Single hose barb P/N	Double hose barb P/N	Triple hose barb P/N	Hose ID
4242N-B322S	4242N-B322D	4242N-B322T	1/2"
4242N-B323S	4242N-B323D	4242N-B323T	3/4"

Hose Barb Dry Boom Nozzle Bodies



Single hose barb P/N	Double hose barb P/N	Triple hose barb P/N	Hose ID
4241N-B121S	4241N-B121D	4241N-B121T	3/8"
4241N-B122S	4241N-B122D	4241N-B122T	1/2"
4241N-B123S	4241N-B123D	4241N-B123T	3/4"

Hose Barb Dry Boom Nozzle Bodies-with Top-Mounted Diaphragm Check Valve



Single hose barb P/N	Double hose barb P/N	Hose ID
4240N-B121S	4240N-B121D	3/8"
4240N-B122S	4240N-B122D	1/2"
4240N-B123S	4240N-B123D	3/4"

Threaded Single Nozzle Bodies



Seal Options/ Housing Reference	1/4" MNPT x 1/4" FNPT			1/4" MNPT x Bayonet	11/16" UNF x Bayonet
	4 PSI	8 PSI	25 PSI	8 PSI	8 PSI
EPDM/Red	4240N-F110	4240N-F120	4240N-F150	4240N-B020	4241N-B120U
Viton/Green	4240N-F110V	4240N-F120V	4240N-F150V	4240N-B020V	-

Hose Barb Dry Boom Nozzle Bodies-No Diaphragm Check Valve



Single hose barb P/N	Double hose barb P/N	Triple hose barb P/N	Hose ID
4231N-B101S	4231N-B101D	4231N-B101T	3/8"
4231N-B102S	4231N-B102D	4231N-B102T	1/2"
4231N-B103S	4231N-B103D	4231N-B103T	3/4"

Accessories

New!

ProStop™ Air-Actuated On/Off Nozzle Control Valve



Part Number	Description
PS3/4F-PN	ProStop™ valve assembly

- Provides flow control on the nozzle body for fast spray activation and positive shutoff
- Easily adapt to your ProFlo single drop, 3 or 5-way nozzle bodies
- Chemically-resistant construction with polypropylene body, PVDF plunger, stainless steel springs and EPDM seals



Standard 1/4" and 6 mm push-connect fittings simplifies installation



Provides fast spray activation & positive shutoff

Dry Boom Adapters for Multi-Turret



Part Number	Type	Clamp Size	Hose Barb
4200-0111N	Single	1/2" Pipe	1/2"
4200-0112N	Single	3/4" Pipe	3/4"
4200-0113N	Single	3/4" Pipe	1"
4200-0114N	Single	1" Pipe	3/4"
4200-0115N	Single	1" Pipe	1"
4200-0211N	Double	1/2" Pipe	1/2"
4200-0212N	Double	3/4" Pipe	3/4"
4200-0213N	Double	3/4" Pipe	1"
4200-0214N	Double	1" Pipe	3/4"
4200-0215N	Double	1" Pipe	1"

Replacement Check Valve (DCV) includes Flynut, Housing and Spring



Housing Reference	Spring Pressure (PSI)/Plunger Reference Color				
	4 PSI/Orange	8 PSI/Black	12 PSI/Yellow	20 PSI/Gray	25 PSI/Blue
Red	4200-0010	4200-0020	4200-0030	4200-0040	4200-0050
Green	4200-0010V	4200-0020V	4200-0030V	4200-0040V	4200-0050V

Red housing indicates for use with EPDM Seals. Green housing indicates for use with Viton Seals.
Note: Diaphragms are sold separately. See replacement part order information below.

Replacement Diaphragm Seal Options for Check Valves

Seal Option	Part Number	Color
EPDM	4200-0004E	Black
Viton	4200-0004V	Green

Replacement Nozzle Body Stem Seals

Part Number	Description/Material	Color
1723-0142	10 mm Wet Boom Stem Seal-EPDM	Black
1721-0220	10 mm Wet Boom Stem Seal-Viton	Green

Accessories

Hose Drops



Part Number	Length	Description Outlet, Inlet
430001	15"	1/4" NPT, 1 1/16" - 16UN(M)
430002	24"	1/4" NPT, 1 1/16" - 16UN(M)
430201	15"	1/4" NPT, Quick Attach Fitting
430202	24"	1/4" NPT, Quick Attach Fitting
430201V	15"	1/4" NPT, Quick Attach Fitting with Viton
430202V	24"	1/4" NPT, Quick Attach Fitting with Viton

Series 404 Swivel and Threaded-Swivel Nozzle Bodies



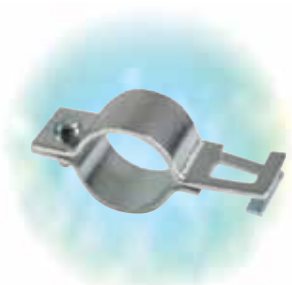
Part Number	Description
4200N-0020	Single Swivel 1/4" FNPT X Quick Attach
4200N-0021	Double Swivel 1/4" FNPT X 2 Quick Attach
4200N-0023	Single 1/4" FNPT X 1 1/16" - 16UN(M)
4200N-0024	Double 1/4" FNPT X 1 1/16" - 16UN(M)
4200N-0025	Red Retaining Cap 1 1/16" - 16UN(F)
4200N-0026	Black Retaining Cap 1 1/16" - 16UN(F)

Quick Fitting Adapters



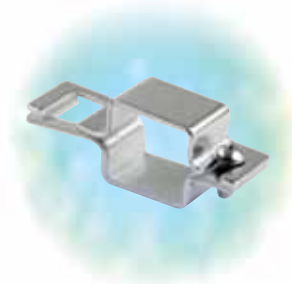
Reference Number	Part Number	Description
1	4200-0016N	1/4" MNPT x Quick Attach
2	4200-0019	1/4" FNPT x Quick Attach

Vari-Spacing Clamps



Part Number	Ball Thread	Piping/Tubing Size
413003	Steel	3/4" (1.050" O.D.)
413004	Steel	1" (1.315" O.D.)
413005	Steel	1-1/4" (1.660" O.D.)

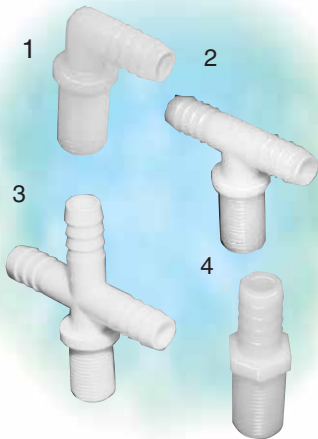
Hypro Dry Boom Clamps with Slot for Easy Assembly



Part Number	Material	Tubing Size
1520-1075	Zinc Plated Steel	3/4" Square Tube
1520-1100	Zinc Plated Steel	1" Square Tube
1520-1125	Zinc Plated Steel	1-1/4" Square Tube
1520-1150	Zinc Plated Steel	1-1/2" Square Tube
1520-1075SS	304 Stainless Steel	3/4" Square Tube
1520-1100SS	304 Stainless Steel	1" Square Tube
1520-1125SS	304 Stainless Steel	1-1/4" Square Tube
1520-1150SS	304 Stainless Steel	1-1/2" Square Tube

11/16" Accessories

11/16" UN Nozzle Bodies



Reference Number	Nylon Part Number	Poly Part Number	Description	Standard Pack
1	NTL14	3NNTL14	11/16" - 16UN(M) X 1/4" HB Elbows	25
1	NTL38	3NNTL38	11/16" - 16UN(M) X 3/8" HB Elbows	25
1	NTL12	3NNTL12	11/16" - 16UN(M) X 1/2" HB Elbows	25
1	NTL58	3NNTL58	11/16" - 16UN(M) X 5/8" HB Elbows	25
1	NTL34	3NNTL34	11/16" - 16UN(M) X 3/4" HB Elbows	25
2	NNT38	3NNTT38	11/16" - 16UN(M) X 3/8" HB Tees	25
2	NNT12	3NNTT12	11/16" - 16UN(M) X 1/2" HB Tees	25
2	NNT58	3NNTT58	11/16" - 16UN(M) X 5/8" HB Tees	25
2	NNT34	3NNTT34	11/16" - 16UN(M) X 3/4" HB Tees	25
3	T38C	3T38C	11/16" - 16UN(M) X 3/8" HB Crosses	25
3	T12C	3T12C	11/16" - 16UN(M) X 1/2" HB Crosses	25
3	T34C	3T34C	11/16" - 16UN(M) X 3/4" HB Crosses	25
4	38D	338D	11/16" - 16UN(M) X 3/8" HB Nozzle Shanks Straight	25
4	3812D	33812D	11/16" - 16UN(M) X 1/2" HB Nozzle Shanks Straight	25

Includes B12/3B12 nut.

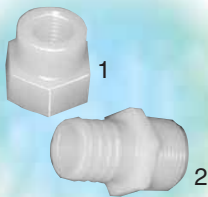
Nozzle Body Cap and Nut



Reference Number	Nylon Part Number	Poly Part Number	Description	Standard Pack
1	3942*	33942*	11/16" - 16UN(F) Nozzle Blank Cap	25
2	8027*	38027*	11/16" - 16UN(F) Nozzle Cap for Tip/Barb	25
3	K8414	3K8414	1/4" HB for 8027/38027 Cap	25
3	K8438	3K8438	3/8" HB for 8027/38027 Cap	25
3	K8412	3K8412	1/2" HB for 8027/38027 Cap	25
4	B12*	3B12*	11/16" - 16UN Jam Nut	25

*Fits all nozzle fittings with 1/16" male straight thread.

Other Nozzle Body Accessories



Reference Number	Nylon Part Number	Poly Part Number	Description	Standard Pack
1	NF1614	3NF1614	11/16" - 16UN(F) X 1/4" FNPT Female Spray Tip Adapter	25
2	NB1614	3NB1614	11/16" - 16UN(M) X 1/4" MNPT Nipple	25
2	NB1612	3NB1612	11/16" - 16UN(M) X 1/2" MNPT Nipple	25

Steel Boom Clamps for use with 11/16" Nozzle Bodies



Part Number	Piping/Tubing Size
BC34R	3/4" Round Pipe (1.05" OD)
BC100R	1" Round Pipe (1.315" OD)
BC100	1" Square Tube
BC114	1-1/4" Square Tube

Boom/Pipe Accessories

Cobra Clip™ Boom Pipe Mounts



Reference Number	Part Number	Description
1	0113434307	¾" or 25mm Nominal Boom Pipe Mount
2	0113434308	1" or 32mm Nominal Boom Pipe Mount w/Keep Strap
2	01134343010	1½" or 40mm Nominal Boom Pipe Mount w/Keep Strap

Black Polypropylene Boom Pipe (Undrilled) - Schedule 80 - 20' Sections



Part Number	Nominal Pipe Size	Pipe Length	Wall Thickness	Wall Tolerance	Outside Diameter	Max. Operating Pressure @ 73° F
8034-F-00PP	¾"	20'	0.154	+0.020	1.050	270
801-F-00PP	1"	20'	0.179	+0.021	1.315	250
80112-F-00PP	1½"	20'	0.220	+0.021	1.905	200

Wet Boom Blanks



Part Number	Material	O-ring	Description
400059	Nylon	EPDM	¾" Pipe
400069	Nylon	EPDM	1" Pipe
400059P	Polypropylene	Viton	¾" Pipe
400069P	Polypropylene	Viton	1" Pipe



Pentair

SPRAY & INJECTION TECHNOLOGIES GROUP

375 Fifth Avenue NW • New Brighton, MN 55112

Phone: (651) 766-6300 • 800-424-9776 • Fax: 800-323-6496

www.hypropumps.com